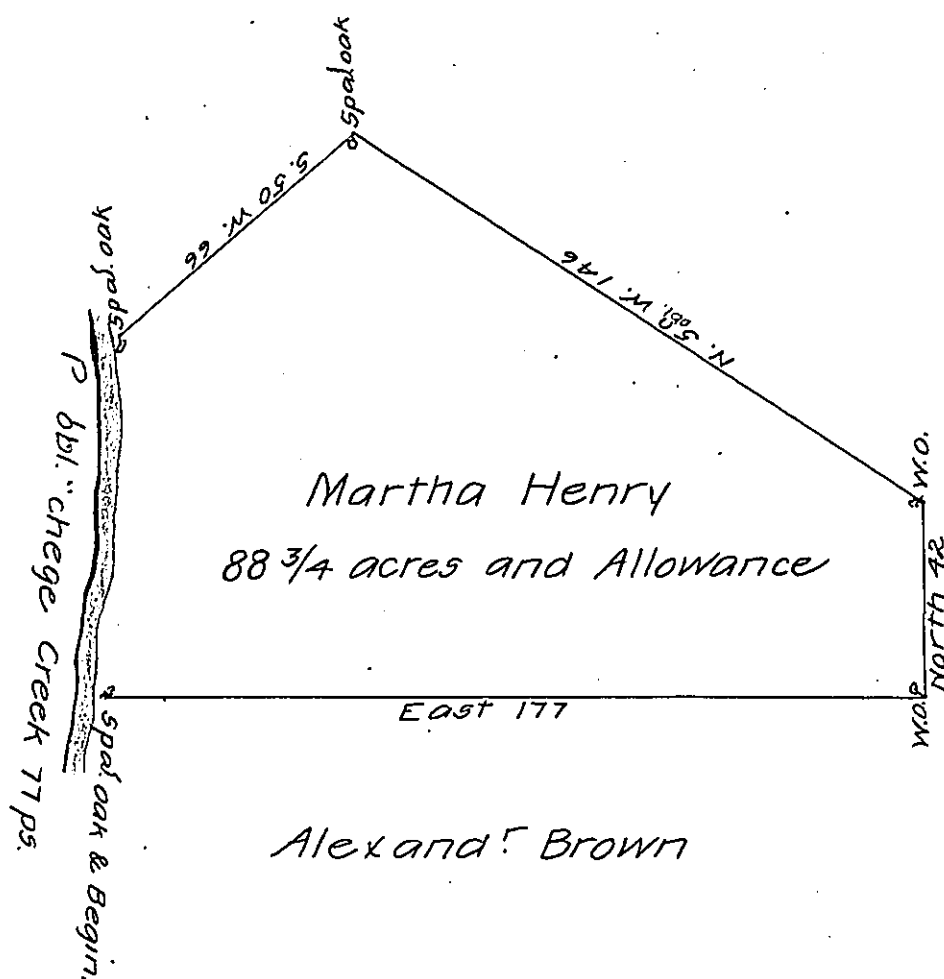


THIS SURVEY ADDED TO ALEX^r WHITES



A Draught of a Tract of Land Situate in Antrim Township in the County of Cumberland, (late part of the County of Lancaster) containing eighty eight acres & three quarters of of an acre and the Allowance Proportional to six acres per Cent for Roads and High ways. Surveyed the 1st Day of October 1745, for Martha Henry by Thomas Cookson Esqr. late Deputy Surveyor of Lancaster County. In pursuance of a W^o bearing Date the 15th Day of October 1744.

Protracted & Calculated from Mr. Cooksons Field Book.

p-Geo. Stevenson one of the
Exec^{rs} of Thos. Cookson Deced.

To Wm. Parson Esqr. }
Surv^r. Gen^l. }

IN TESTIMONY that the above is a copy of the original remaining on file in the Department of Internal Affairs of Pennsylvania, made conformably to an Act of Assembly approved the 16th day of February 1833, I have hereunto set my hand and caused the Seal of said Department to be affixed at Harrisburg, this twenty-seventh day of April 1907

Geo. A. Brown
Secretary of Internal Affairs.